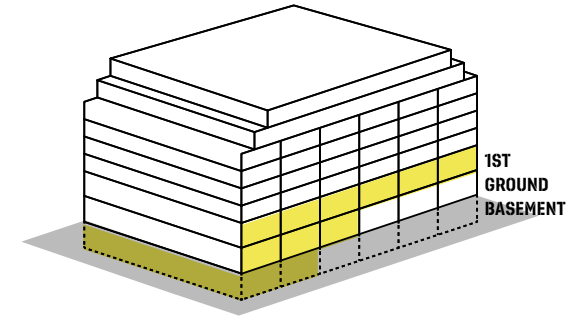


5 OXFORD ST 0

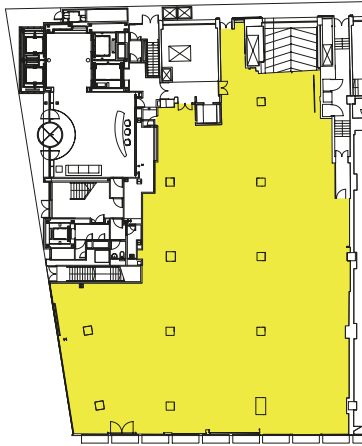
ACCOMMODATION OPTION 1 - FLAGSHIP STORE TO LET

494-502 OXFORD ST

30,600 SQ FT / 2,843 SQ M

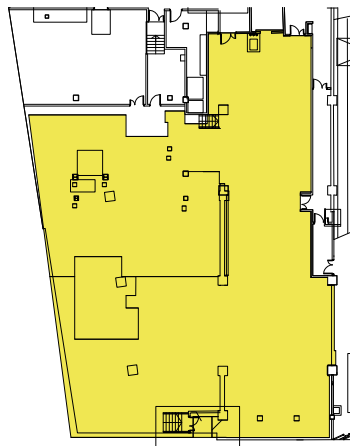


GROUND FLOOR 1,350 SQ FT / 125 SQ M



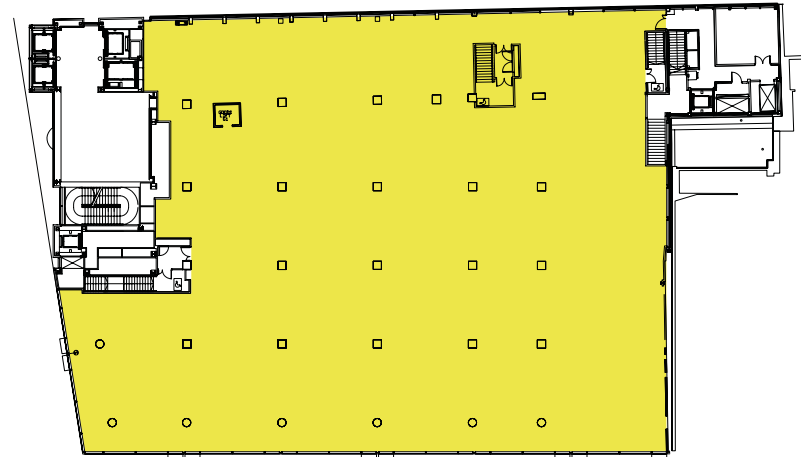
OXFORD STREET

BASEMENT FLOOR 6,000 SQ FT / 557 SQ M



OXFORD STREET

FIRST FLOOR 20,000 SQ FT / 1,858 SQ M



OXFORD STREET

NORTH



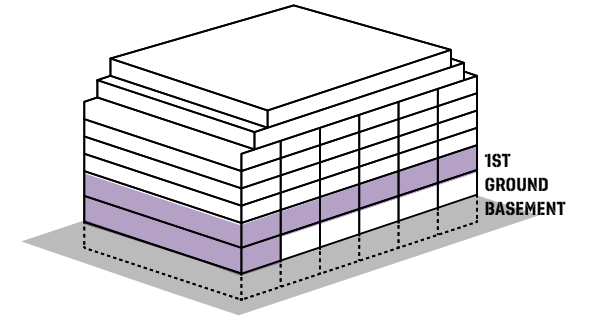
For indicative purposes only. Not to scale.

5 OXFORD ST 0

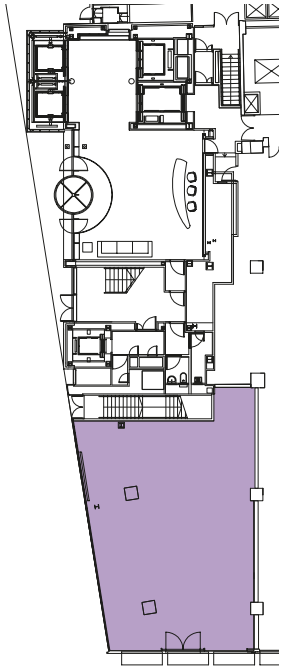
ACCOMMODATION OPTION 2

502-504 OXFORD ST

21,350 SQ FT / 1,983 SQ M

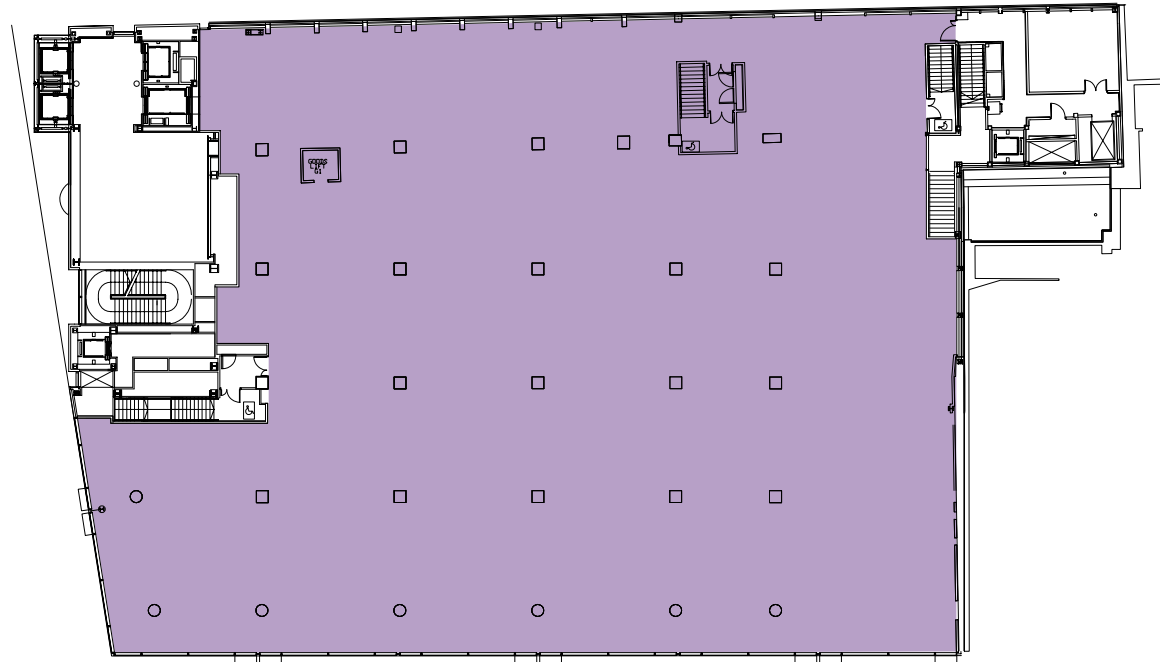


GROUND FLOOR 1,350 SQ FT / 125 SQ M



OXFORD STREET

FIRST FLOOR 20,000 SQ FT / 1,858 SQ M



OXFORD STREET

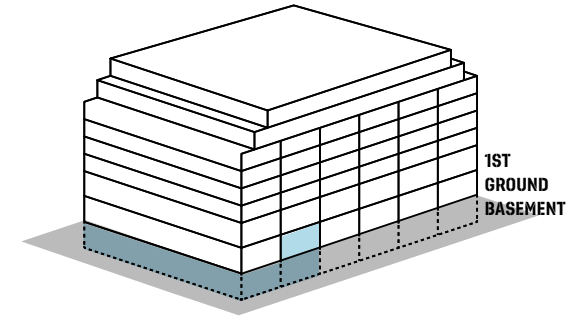
NORTH



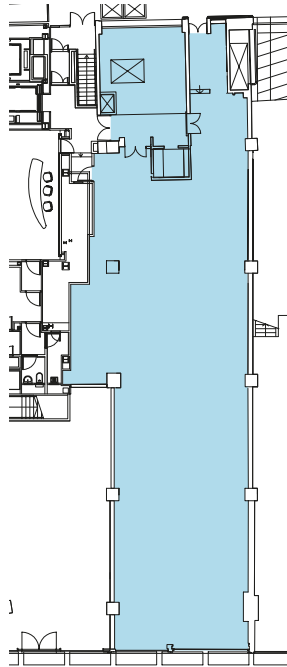
For indicative purposes only. Not to scale.

ACCOMMODATION OPTION 3

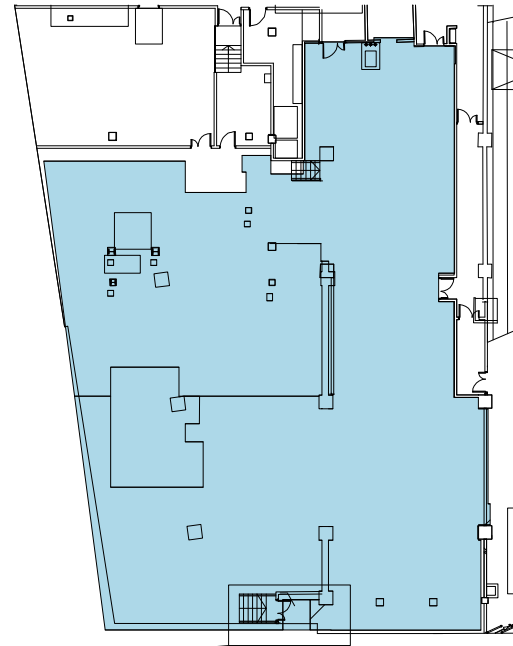
498-500 OXFORD ST
9,250 SQ FT / 859 SQ M



GROUND FLOOR 3,250 SQ FT / 302 SQ M



BASEMENT FLOOR 6,000 SQ FT / 557 SQ M



Accommodation retail units of existing occupiers for reference only.

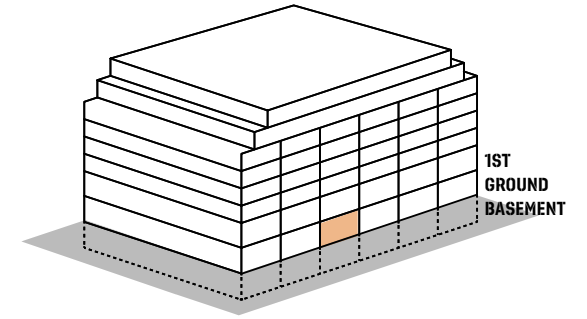


For indicative purposes only. Not to scale.

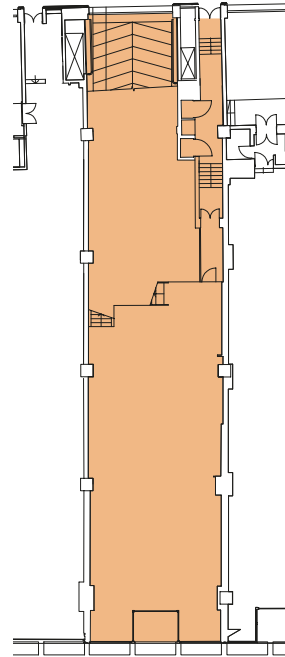
5
OXFORD ST
0

ACCOMMODATION OPTION 4

494-496 OXFORD ST
3,250 SQ FT / 302 SQ M



GROUND FLOOR 3,250 SQ FT / 302 SQ M



OXFORD STREET

NORTH



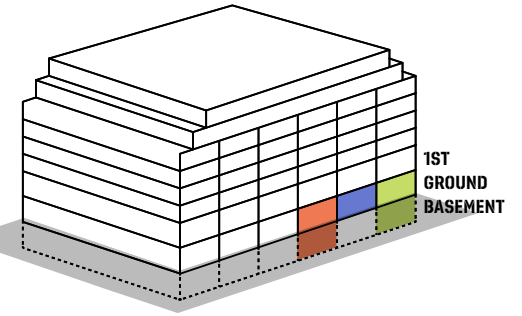
For indicative purposes only. Not to scale.

ACCOMMODATION OPTION 5, 6 & 7 - ACCOMMODATION RETAIL UNITS OF EXISTING OCCUPIERS FOR REFERENCE ONLY

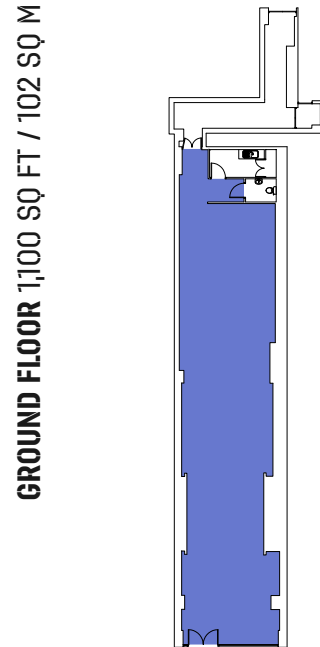
490-492 OXFORD ST
3,534 SQ FT / 328 SQ M
DUNE

488 OXFORD ST
1,100 SQ FT / 102 SQ M
EE

484-486 OXFORD ST
5,225 SQ FT / 486 SQ M
RUSSELL & BROMLEY



OXFORD STREET



OXFORD STREET



OXFORD STREET

Accommodation retail units of existing occupiers for reference only.



For indicative purposes only. Not to scale.